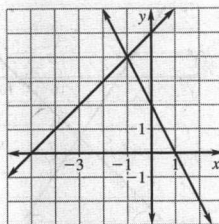


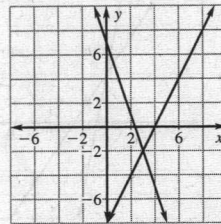
Answers

Lesson 7.1

20. $(-1, 4)$

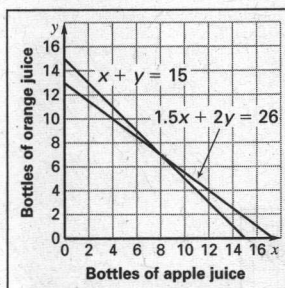


21. $(3, -2)$



22. between 1995 and 1996; about 1175 thousand people

23.



8 bottles of apple juice and 7 bottles of orange juice

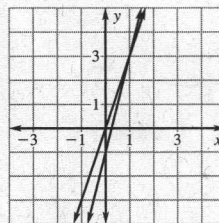
Practice Level B

1. no 2. yes 3. yes 4. no 5. no 6. yes

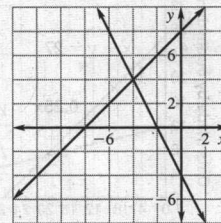
7. $(3, -5)$ 8. $(-1, 4)$ 9. $(-2, 2)$ 10. $(4, -2)$

11. $(-5, 3)$ 12. $(0, 4)$

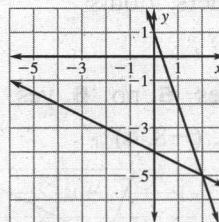
13. $(1, 3)$



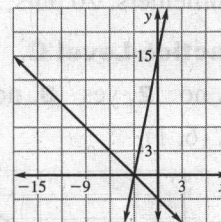
14. $(-4, 4)$



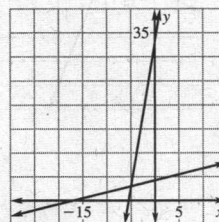
15. $(2, -5)$



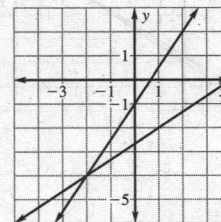
16. $(-3, 0)$



17. $(-5, 3)$



18. $(-2, -4)$



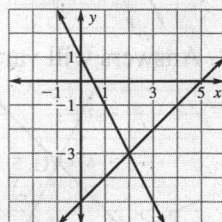
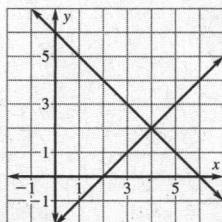
Practice Level A

1. yes 2. no 3. yes 4. no 5. no 6. yes

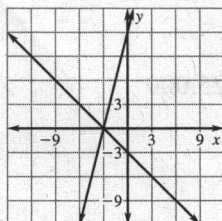
7. B 8. A 9. C 10. F 11. E 12. D

13. $(2, -1)$ 14. $(3, 4)$ 15. $(-1, -1)$

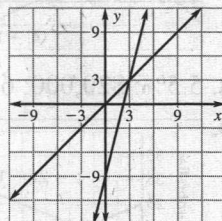
16. $(4, 2)$ 17. $(2, -3)$



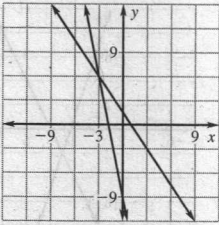
18. $(-3, 0)$



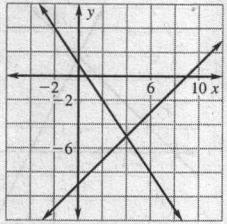
19. $(3, 3)$



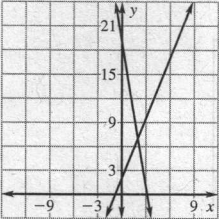
19. $(-3, 6)$



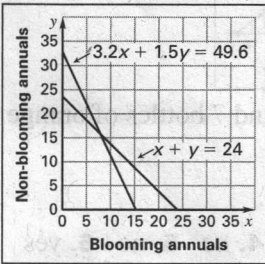
20. $(4, -5)$



21. $(2, 7)$



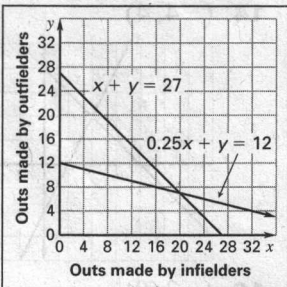
22.



8 blooming annuals and 16 non-blooming annuals

23. a. $x + y = 27$ and $0.25x + y = 12$

b.



c. infielders: 20 outs; outfielders: 7 outs